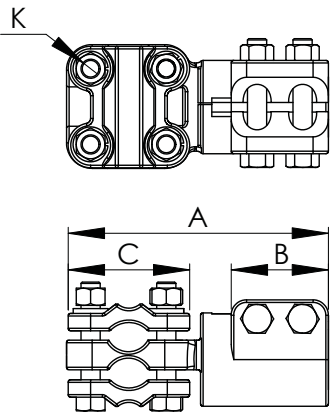
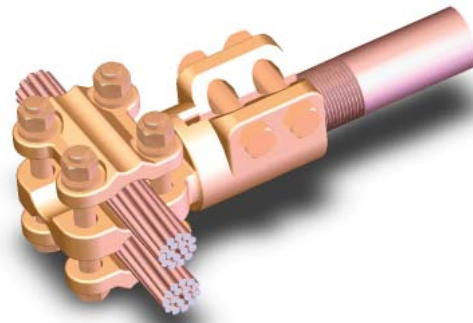
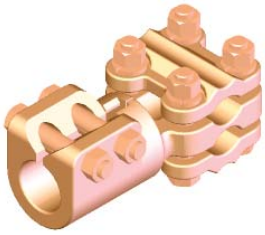


**SECTION**

**14-2WRX2**

**BRONZE STUD CONNECTORS STUD TO CABLE (PARALLEL OR PERPENDICULAR)**



A strong and dependable connector for joining a threaded stud to a cable, the type BSCX relies on a high conductivity copper alloy for its durability.

Clamping hardware is silicon bronze for resistance to corrosion.

For unthreaded studs or stud sizes not listed, please specify with the order.

CATALOG NUMBER	STUD SIZE	CABLE SIZE		DIMENSIONS IN INCHES			
		AWG MIN	MCM MAX	A	B	C	K
14-235-WRX2	1-14	2/0	1000	4 7/8	2 1/4	2 3/8	1/2
14-238-WRX2	1 1/8-12	2/0	1000	4 7/8	2 1/4	2 3/8	1/2
14-241-WRX2	1 1/4-12	2/0	1000	5 3/8	2 1/2	2 3/8	1/2
14-244-WRX2	1 1/2-12	2/0	1000	5 3/8	2 1/2	2 3/8	1/2
14-247-WRX2	2-12	2/0	1000	5 3/8	2 1/2	2 3/8	5/8
14-251-WRX2	2 1/4-12	2/0	1000	5 3/8	2 1/2	2 3/8	5/8
14-255-WRX2	2 1/2-12	2/0	1000	5 3/8	2 1/2	2 3/8	5/8
14-259-WRX2	2 3/4-12	2/0	1000	6	3 1/4	2 3/8	5/8
14-263-WRX2	3-12	2/0	1000	6	3 1/4	2 3/8	5/8
14-267-WRX2	3 1/4-12	2/0	1000	6	3 1/4	2 3/8	5/8
14-270-WRX2	3 1/2-12	2/0	1000	6 3/8	3 1/2	2 3/8	5/8
14-273-WRX2	4-12	2/0	1000	6 3/8	3 1/2	2 3/8	5/8