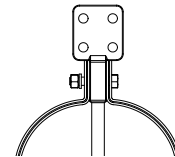
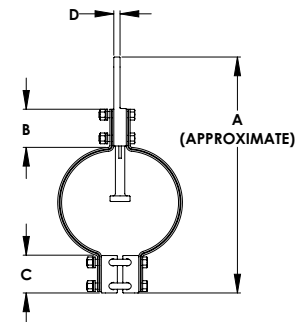
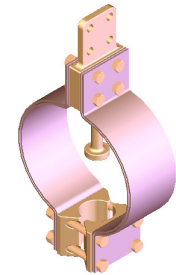


# BRONZE EXPANSION TERMINALS, PIPE TO FLAT PAD

SECTION

15-1

CATALOG NUMBER	PIPE SIZE IPS	PAD STYLE	DIMENSIONS IN INCHES				HARDWARE
			A	B	C	D	
15-234	3/4	B	12	2 3/4	2 3/4	3/8	1/2
15-235	3/4	C	12	2 3/4	2 3/4	3/8	1/2
15-236	3/4	D	12	2 3/4	2 3/4	3/8	1/2
15-237	1	B	16	3 3/16	3 3/16	7/16	1/2
15-238	1	C	16	3 3/16	3 3/16	7/16	1/2
15-239	1	D	16	3 3/16	3 3/16	7/16	1/2
15-240	1 1/4	B	16	3 1/8	3 1/8	7/16	1/2
15-241	1 1/4	C	16	3 1/8	3 1/8	7/16	1/2
15-242	1 1/4	D	16	3 1/8	3 1/8	7/16	1/2
15-243	1 1/2	B	16	3 1/16	3 1/16	1/2	1/2
15-244	1 1/2	C	16	3 1/16	3 1/16	1/2	1/2
15-245	1 1/2	D	16	3 1/16	3 1/16	1/2	1/2
15-246	2	B	16	3 1/8	3 1/8	1/2	1/2
15-247	2	C	16	3 1/8	3 1/8	1/2	1/2
15-248	2	D	16	3 1/8	3 1/8	1/2	1/2
15-249	2 1/2	B	16	4	4	5/8	5/8
15-250	2 1/2	C	16	4	4	5/8	5/8
15-251	2 1/2	D	16	4	4	5/8	5/8
15-252	3	B	16	3 15/16	3 15/16	11/16	5/8
15-253	3	C	16	3 15/16	3 15/16	11/16	5/8
15-254	3	D	16	3 15/16	3 15/16	11/16	5/8
15-255	3 1/2	B	16	3 3/4	3 3/4	3/4	5/8
15-256	3 1/2	C	16	3 3/4	3 3/4	3/4	5/8
15-257	3 1/2	D	16	3 3/4	3 3/4	3/4	5/8
15-258	4	B	16	4 5/8	4 5/8	7/8	5/8
15-259	4	C	16	4 5/8	4 5/8	7/8	5/8
15-260	4	D	16	4 5/8	4 5/8	7/8	5/8
15-261	4 1/2	B	16	4 3/4	4 3/4	1	5/8
15-262	4 1/2	C	16	4 3/4	4 3/4	1	5/8
15-263	4 1/2	D	16	4 3/4	4 3/4	1	5/8
15-264	5	B	25	5 1/16	5 1/16	1 1/8	5/8
15-265	5	C	25	5 1/16	5 1/16	1 1/8	5/8
15-266	5	D	25	5 1/16	5 1/16	1 1/8	5/8
15-267	6	B	25	6	6	1 1/4	5/8
15-268	6	C	25	6	6	1 1/4	5/8
15-269	6	D	25	6	6	1 1/4	5/8



For Pad Rotated 90 Degrees  
Use Suffix (V)  
Example 15-244V

To protect equipment bushings, switch gear, and insulators from expanding or contracting pressures, the type BETP, which joins a pipe to a flat bar bus, efficiently compensates for temperature variations.

Made of a high conductivity copper alloy for strength and durability, it features flexible shunts of laminated soft copper designed to carry the maximum current of the bus it connects.

To enhance clamping capabilities and resistance to corrosion, all bolts, nuts, and lockwashers are silicon bronze. For single-wrench installation, bolt heads are captivated.

FOR EHPS (SCH80) INTERNAL PIPE FITTINGS USE SUFFIX (H)  
EX. 15-269H