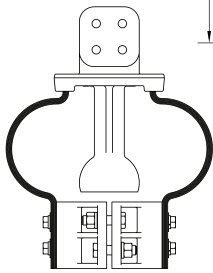
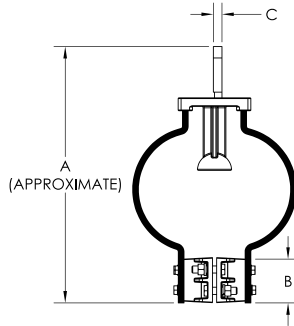
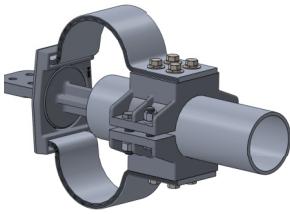


SECTION

15-1A

ALUMINUM EXPANSION
TERMINALS, PIPE TO FLAT PAD

For Pad Rotated 90 Degrees
Use Suffix (V)

Example 15-292V

When it is necessary to connect a pipe to a flat bar bus and compensate for temperature variations, the type AETP is a dependable connector.

Made of a lightweight aluminum alloy, it effectively protects equipment bushings, switch gear, and insulators from expanding or contracting bar pressures.

The flexible shunts of laminated soft aluminum are designed to carry the maximum current of the bus it connects.

Bolts, nuts, and lockwashers of high tensile aluminum insure clamping strength and resistance to wear. To facilitate installation, all bolt heads are captivated.

CATALOG NUMBER	PIPE SIZE IPS	PAD STYLE	DIMENSIONS IN INCHES			HARDWARE
			A	B	C	
15-270	1/2	B	16.5	4	3/8	1/2
15-271	1/2	C	16.5	4	3/8	1/2
15-272	1/2	D	17.5	4	3/8	1/2
15-273	3/4	B	16.5	2 3/4	3/8	1/2
15-274	3/4	C	16.5	2 3/4	3/8	1/2
15-275	3/4	D	17.5	2 3/4	3/8	1/2
15-276	1	B	16.5	3 3/16	7/16	1/2
15-277	1	C	16.5	3 3/16	7/16	1/2
15-278	1	D	17.5	3 3/16	7/16	1/2
15-279	1 1/4	B	16.5	3 1/8	7/16	1/2
15-280	1 1/4	C	16.5	3 1/8	7/16	1/2
15-281	1 1/4	D	17.5	3 1/8	7/16	1/2
15-282	1 1/2	B	16.5	3 1/16	1/2	1/2
15-283	1 1/2	C	16.5	3 1/16	1/2	1/2
15-284	1 1/2	D	17.5	3 1/16	1/2	1/2
15-285	2	B	16.5	3 1/8	1/2	1/2
15-286	2	C	16.5	3 1/8	1/2	1/2
15-287	2	D	17.5	3 1/8	1/2	1/2
15-288	2 1/2	B	16.5	4	5/8	5/8
15-289	2 1/2	C	16.5	4	5/8	5/8
15-290	2 1/2	D	17.5	4	5/8	5/8
15-291	3	B	16.5	3 15/16	11/16	5/8
15-292	3	C	16.5	3 15/16	11/16	5/8
15-293	3	D	17.5	3 15/16	11/16	5/8
15-294	3 1/2	B	16.5	3 3/4	3/4	5/8
15-295	3 1/2	C	16.5	3 3/4	3/4	5/8
15-296	3 1/2	D	17.5	3 3/4	3/4	5/8
15-297	4	B	16.5	4 5/8	7/8	5/8
15-298	4	C	16.5	4 5/8	7/8	5/8
15-299	4	D	17.5	4 5/8	7/8	5/8
15-300	4 1/2	B	16.5	4 3/4	1	5/8
15-301	4 1/2	C	16.5	4 3/4	1	5/8
15-302	4 1/2	D	17.5	4 3/4	1	5/8
15-303	5	B	22	5 1/16	1 1/8	5/8
15-304	5	C	22	5 1/16	1 1/8	5/8
15-305	5	D	23	5 1/16	1 1/8	5/8
15-306	6	B	25.5	6	1 1/4	5/8
15-307	6	C	25.5	6	1 1/4	5/8
15-308	6	D	26.5	6	1 1/4	5/8

FOR EHPS (SCH80) INTERNAL PIPE FITTINGS USE SUFFIX (H)
EX. 15-308H