

COPPER COMPRESSION FITTINGS CABLE TO FLAT PAD

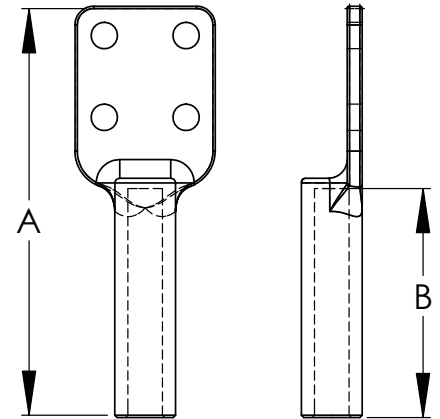
SECTION

16-1



COPPER TYPE BCP

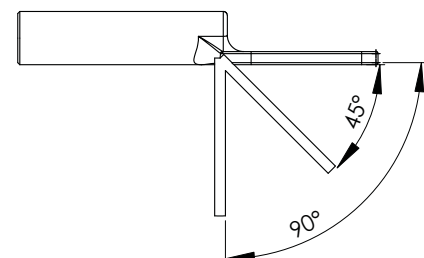
CATALOG NUMBER W/ PAD SIZE	CABLE SIZE AWG or MCM		DIMENSIONS IN INCHES		DIE REF	PAD THICKNESS
	MIN	MAX	A	B		
16-101B	2		6 1/4	2	0.640	1/4
16-102B	1/0		6 7/16	2 3/4	0.840	5/16
16-103B	2/0		6 7/8	2 3/4	0.840	5/16
16-104B	3/0		6 7/8	2 3/4	0.840	5/16
16-106B	4/0		6 7/8	2 3/4	0.840	5/16
16-106C	4/0		7 9/16	3	0.840	5/16
16-107B	250		6 15/16	2 3/4	0.840	5/16
16-107C	250		7 9/16	3	0.840	5/16
16-109B	300		7 3/8	3	1.0	5/16
16-109C	300		7 1/2	3	1.0	5/16
16-111B	350		7 9/16	3	1.125	5/16
16-111C	350		7 9/16	3	1.0	5/16
16-111D	350		8 1/2	3 1/2	1.0	5/16
16-113B	500		7 7/8	3 3/4	1.125	5/16
16-113C	500		8 3/4	4	1.125	3/8
16-113D	500		8 5/8	3 3/4	1.125	5/16
16-115B	750		8 5/8	4	1.312	3/8
16-115C	750		8 5/8	4	1.312	3/8
16-115D	750		9 1/4	3 3/4	1.312	3/8
16-117B	800		9 1/4	4	1.5	3/8
16-117C	800		9 1/4	4	1.5	7/16
16-117D	800		9 1/4	4 1/4	1.5	7/16
16-119B	1000		8 3/4	4	1.5	7/16
16-119C	1000		8 3/4	4	1.5	7/16
16-119D	1000		9 1/2	4 1/2	1.5	5/16
16-120B	1250		10 1/8	5	2.375	3/4
16-120C	1250		10 1/8	5	2.375	3/4
16-120D	1250		9 1/2	4 1/2	2.375	5/16
16-121B	1500		9	4 1/4	2.375	5/8
16-121C	1500		9 1/4	4 1/2	2.375	5/8
16-121D	1500		9 1/2	4 1/2	2.375	5/8
16-122B	2000		9	4 1/4	2.375	3/4
16-122C	2000		9 1/4	4 1/2	2.375	3/4
16-122D	2000		9 1/2	4 1/2	2.375	3/4



The pure copper compression terminals for connecting copper cable bus to a flat pad have the crimping die sizes clearly marked for ease of installation.

For pads other than parallel to the cable bus add the degree variation from parallel to the catalog No.

Example: for pad 45 degrees from parallel to cable run specify catalog 16-113C-45.



To insure the long term service and reliability of compression connectors the use of filler compounds is essential. Additional filler should be used in any application where the connector is installed with the barrel in the upright position.