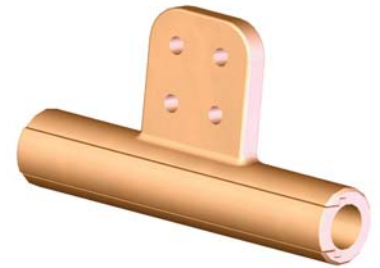
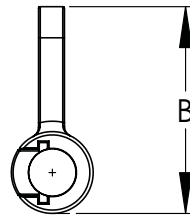
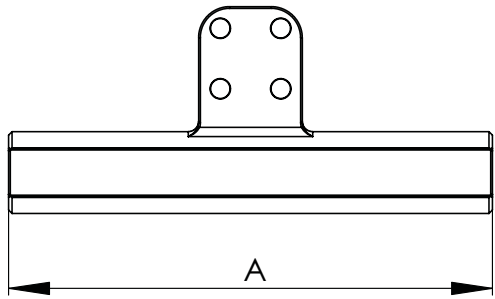


COPPER COMPRESSION TEE FITTINGS CABLE TO FLAT PAD

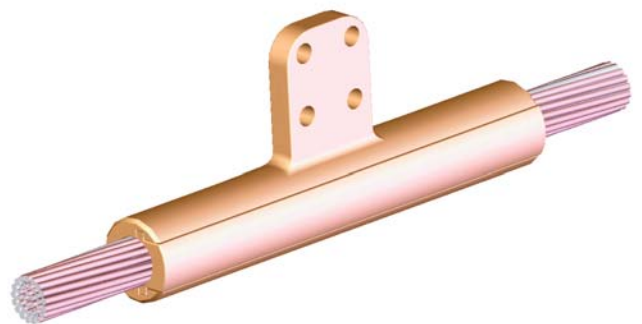
SECTION

16-2



BRONZE Type -T				
CATALOG NUMBER w/PAD SIZE	CABLE SIZE AWG or MCM MIN. MAX	DIMENSIONS		DIE REF.
		A	B	
16-101B-T	2	5 1/4	1 1/2	.640
16-102B-T	1/0	5 1/4	1 1/2	.840
16-103B-T	2/0	6	2	.840
16-104B-T	3/0	6	2	.840
16-106B-T	4/0	5 1/4	1 1/2	.840
16-106C-T	4/0	6 1/4	1 1/2	.840
16-107B-T	250	5 1/4	1 1/2	.840
16-107C-T	250	5 1/4	1 1/2	.840
16-107D-T	250	6 1/4	1 1/2	.840
16-109B-T	300	6 1/2	2 1/4	.840
16-109C-T	300	6 1/2	2 1/4	.840
16-109D-T	300	7 1/2	2 1/4	.840
16-111B-T	350	7 3/4	1 3/4	.840
16-111C-T	350	7 3/4	1 3/4	.840
16-111D-T	350	7 7/8	1 3/4	.840
16-113B-T	500	7 5/8	3 3/4	1.125
16-113C-T	500	7 5/8	3 3/4	1.125
16-113D-T	500	8 5/8	3 3/4	1.125
16-115B-T	750	7 5/8	3 3/4	1.500
16-115C-T	750	7 5/8	3 3/4	1.500
16-115D-T	750	8 5/8	3 3/4	1.500
16-117B-T	800	11 1/8	6 3/4	1.500
16-117C-T	800	11 1/8	6 3/4	1.500
16-117D-T	800	12 1/8	6 3/4	1.500
16-119B-T	1000	14	9 1/4	1.500
16-119C-T	1000	14	9 1/4	1.500
16-119D-T	1000	15	9 1/4	1.500
16-121B-T	1500	14	9 1/4	1.843
16-121C-T	1500	14	9 1/4	1.843
16-121D-T	1500	15	9 1/4	1.843
16-122B-T	2000	14	9 1/4	2.937
16-122C-T	2000	14	9 1/4	2.937
16-122D-T	2000	15	9 1/4	2.937

The pure copper compression tee terminals for connecting copper cable bus to a perpendicular flat pad have the crimping die sizes clearly marked for ease of installation.



To insure the long term service and reliability of compression connectors the use of filler compounds is essential. Additional filler should be used in any application where the connector is installed with the barrel in the upright position.