

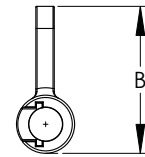
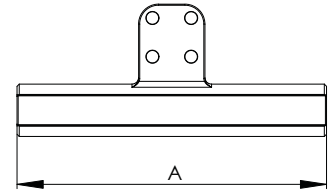
# ALUMINUM COMPRESSION TEE FITTINGS CABLE TO FLAT PAD

SECTION

16-2A

## ALUMINUM TYPE-T

CATALOG NUMBER W/ PAD SIZE	AAC AWG or MCM MIN. MAX		ACSR AWG OR MCM MIN. MAX		CONDUCTOR DIAMETER	DIMENSIONS		DIE REF.	PAD THICK- NESS
	A	B							
16-124B-T	1/0	1/0	.326-.398	7 1/2	4.84	0.840	1/2		
16-125B-T	2/0	2/0	.399-.447	7 1/2	4.84	0.840	1/2		
16-128B-T	3/0	3/0	.448-.502	7 1/2	4.84	0.840	1/2		
16-129B-T	4/0	4/0	.503-.563	7 1/2	4.84	0.840	1/2		
16-130B-T	226.8-300	266.8(26/7)	.564-.642	10	5 1/8	1.312	1/2		
16-130C-T	226.8-300	266.8(26/7)	.564-.642	10	5 1/8	1.312	3/4		
16-134B-T	336.4(19)-350(37)	336.4(36/1)-336.4(18/1)	.643-.684	10	5 1/8	1.312	1/2		
16-134C-T	336.4(19)-350(37)	336.4(36/1)-336.4(18/1)	.643-.684	10	5 1/8	1.312	3/4		
16-139B-T	397.5(19)-400(37)	336.4(26/7)-397.5(18/1)	.685-.743	10	5 1/8	1.312	1/2		
16-139C-T	397.5(19)-400(37)	336.4(26/7)-397.5(18/1)	.685-.743	10	5 1/8	1.312	3/4		
16-144B-T	450(37)-500(37)	397.5(24/7)-477(18/1)	.744-.814	10	5 5/16	1.312	1/2		
16-144C-T	450(37)-500(37)	397.5(24/7)-477(18/1)	.744-.814	10	5 1/16	1.312	3/4		
16-146B-T	550(61)-556.5(37)	477(24/7)-477(30/7)	.815-.883	10	5 5/16	1.312	1/2		
16-146C-T	550(61)-556.5(37)	477(24/7)-477(30/7)	.815-.883	10	5 1/16	1.312	3/4		
16-148B-T	600(37)-650(91)	556.5(24/7)-556.5(30/7)	.884-.953	12	5 1/2	1.500	1/2		
16-148C-T	600(37)-650(91)	556.5(24/7)-556.5(30/7)	.884-.953	12	5 1/2	1.500	3/4		
16-152B-T	700(61)-817(61)	605(26/7)-715.5(30/19)	.954-1.081	12	5 1/2	1.843	1/2		
16-152C-T	700(61)-817(61)	605(26/7)-715.5(30/19)	.954-1.081	12	5 1/2	1.843	3/4		
16-152D-T	700(61)-817(61)	605(26/7)-715.5(30/19)	.954-1.081	12	6 1/2	1.843	3/4		
16-161B-T	900(37)-1000(61)	795(24/7)-874.5(54/7)	1.082-1.152	12	5 1/2	1.843	1/2		
16-161C-T	900(37)-1000(61)	795(24/7)-874.5(54/7)	1.082-1.152	12	5 1/2	1.843	3/4		
16-161D-T	900(37)-1000(61)	795(24/7)-874.5(54/7)	1.082-1.152	12	6 1/2	1.843	3/4		
16-164B-T	1033.5(37)-1113(61)	900(54/7)-954(54/7)	1.153-1.216	13	6 1/8	2.125	1/2		
16-164C-T	1033.5(37)-1113(61)	900(54/7)-954(54/7)	1.153-1.216	13	6 1/8	2.125	3/4		
16-164D-T	1033.5(37)-1113(61)	900(54/7)-954(54/7)	1.153-1.216	13	7 1/8	2.125	3/4		
16-165C-T	1192.5(61)-1272(61)	1033.5(54/7)- 1113(54/19)	1.217-1.300	14	6 3/8	2.375	3/4		
16-165D-T	1192.5(61)-1272(61)	1033.5(54/7)- 1113(54/19)	1.217-1.300	14	7 3/8	2.375	1		
16-167C-T	1400(91)-1510.5(61)	1272(45/7)-1351.5(54/19)	1.301-1.424	14	6 3/8	2.375	3/4		
16-167D-T	1400(91)-1510.5(61)	1272(45/7)-1351.5(54/19)	1.301-1.424	14	7 3/8	2.375	1		
16-168C-T	1590(61)-1700(127)	1351.3(54/19)-1510.5(54/19)	1.425-1.503	14	6 3/8	2.375	3/4		
16-168D-T	1590(61)-1700(127)	1351.3(54/19)-1510.5(54/19)	1.425-1.503	14	7 3/8	2.375	1		
16-169C-T	1750(127)	1570.5(54/19)-1590(54/19)	1.504-1.545	14	6 3/8	2.375	3/4		
16-169D-T	1750(127)	1570.5(54/19)-1590(54/19)	1.504-1.545	14	7 3/8	2.375	1		
16-170D-T	2000(91)(127)	1780(84/19)	1.546-1.659	14	7 15/16	2.937	1		
16-171D-T	2250(91)(127)	2156(84/19)	1.660-1.762	14	7 15/16	2.937	1		
16-172D-T	2500(127)		1.763-1.824	14	7 15/16	2.937	1		
16-173D-T	3000(127)		1.825-1.996	14	7 15/16	2.937	1		
16-174D-T	3500(127)		1.997-2.160	14	7 15/16	2.937	1		



The cast electrical aluminum compression terminals for connecting aluminum cable bus to a perpendicular flat pad have the crimping die sizes clearly marked for ease of installation.



To insure the long term service and reliability of compression connectors the use of filler compounds is essential. Additional filler should be used in any application where the connector is installed with the barrel in the upright position.