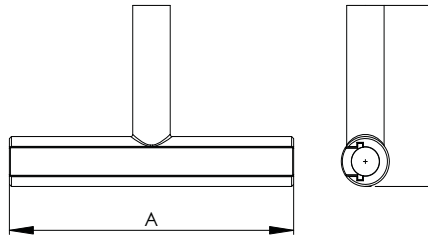
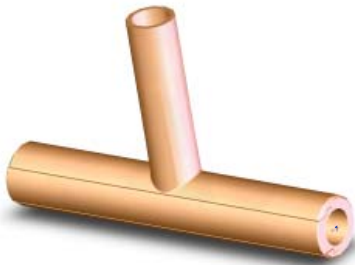


SECTION

16-3

COPPER COMPRESSION TEE
FITTINGS CABLE TO CABLE

The pure copper compression tee terminals for connecting copper cable main to a copper cable tap have the crimping die sizes clearly marked for ease of installation.

COPPER TYPE CT

CATALOG NUMBER	CABLE SIZE AWG or MCM MIN MAX	DIMENSIONS IN INCHES		DIE REF
		A	B	
101	2	5 3/4	1 1/2	.640
102	1/0	5 3/4	1 1/2	.840
103	2/0	6	2	.840
104	3/0	6	2	.840
106	4/0	6	1 1/2	1.000
107	250	6	1 1/2	1.000
109	300	6 1/2	2 1/4	1.125
111	350	7 1/2	1 3/4	1.125
113	500	7 5/8	3 3/4	1.312
115	750	9	3 3/4	1.843
117	800	11 1/8	6 3/4	1.843
119	1000	14	9 1/4	1.843
121	1500	14	9 1/4	2.375
122	2000	14	9 1/4	2.937

To establish an item number define the run and tap by the corresponding numbers above and add a suffix "R" for the run and "T" for the tap.

For example, to depict a connector consisting of a 750MCM run and a 500MCM tap the part number should be created as follows;

Find the corresponding values

115 = 750MCM

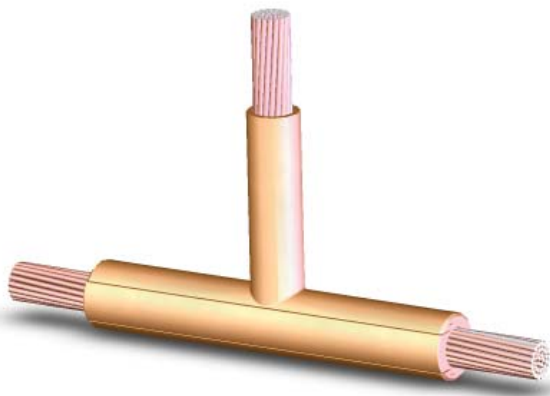
113 = 500MCM

Fill in the blanks

16-___R-___T

And you have a part number

16-115R-113T



To insure the long term service and reliability of compression connectors the use of filler compounds is essential. Additional filler should be used in any application where the connector is installed with the barrel in the upright position.