

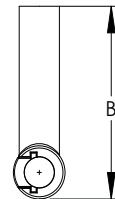
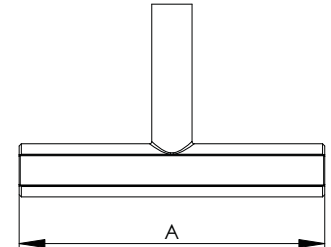
ALUMINUM COMPRESSION TEE FITTINGS CABLE TO CABLE

SECTION

16-3A

ALUMINUM TYPE CT

CATALOG NUMBER	AAC SIZE AWG or MCM MIN MAX		ACSR SIZE AWG or MCM MIN MAX		CONDUCTOR DIAMETER	DIMENSIONS IN INCHES		DIE REF
	A	B						
124	1/0		1/0		.355-.398	7 1/2	3 7/8	.840
125	2/0		2/0		.414-.447	7 1/2	3 7/8	.840
128	3/0		3/0		.464-.502	7 1/2	3 7/8	.840
129	4/0		4/0		.522-.563	7 1/2	3 7/8	.840
130	226.8-300		266.8(26/7)		.586-.642	10	5 1/16	1.312
134	336.4(19)-350(37)		336.4(36/1)-336.4(18/1)		.666-.684	10	5 1/16	1.312
139	397.5(19)-400(37)		336.4(26/7)-397.5(18/1)		.721-.743	10	5 1/16	1.312
144	450(37)-500(37)		397.5(24/7)-477(18/1)		.772-.814	10	5 1/16	1.312
146	550(61)-556.5(37)		477(24/7)-477(30/7)		.846-.883	10	5 1/16	1.312
148	600(37)-650(91)		556.5(24/7)-556.5(30/7)		.879-.953	12	5 1/2	1.500
152	700(61)-817(61)		605(26/7)-715.5(30/19)		.964-1.028	12	7 7/8	1.843
161	900(37)-1000(61)		795(24/7)-874.5(54/7)		1.092-1.152	12	7 7/8	1.843
164	1033.5(37)-1113(61)		900(54/7)-954(54/7)		1.162-1.216	13	9 1/8	2.125
165	1192.5(61)-1272(61)		1033.5(54/7)-1113(54/19)		1.246-1.300	14	10 5/8	2.375
167	1400(91)-1510.5(61)		1272(45/7)-1351.5(54/19)		1.345-1.424	14	10 5/8	2.375
168	1590(61)-1700(127)		1351.3(54/19)-1510.5(54/19)		1.424-1.506	14	10 5/8	2.375
169	1750(127)		1570.5(54/19)-1590(54/19)		1.506-1.545	14	10 5/8	2.375
170	2000(91)(127)		1780(84/19)		1.602-1.659	16	11	2.937
171	2250(91)(127)		2156(84/19)		1.729-1.762	16	11	2.937
172	2500(127)				1.824	16	11	2.937
173	3000(127)				1.996	16	11	2.937
174	3500(127)				2.160	16	11	2.937



The cast electrical aluminum compression terminals for connecting an aluminum cable main to an aluminum cable tap have the crimping die sizes clearly marked for ease of installation.

To establish an item number define the run and tap by the corresponding numbers above and add a suffix "R" for the run and "T" for the tap.

For example, to depict a connector consisting of a 1590 ACSR run and a 795 ACSR tap the part number should be created as follows;

Find the corresponding values

169 = 1590 ACSR

161 = 795 ACSR

Fill in the blanks

16-___R-___T

And you have a part number

16-169R-161T



To insure the long term service and reliability of compression connectors the use of filler compounds is essential. Additional filler should be used in any application where the connector is installed with the barrel in the upright position.