

ALUMINUM WELDMENT CONNECTORS PIPE TO FLAT PAD

SECTION

18-1

SIDE FORMED
(STANDARD)

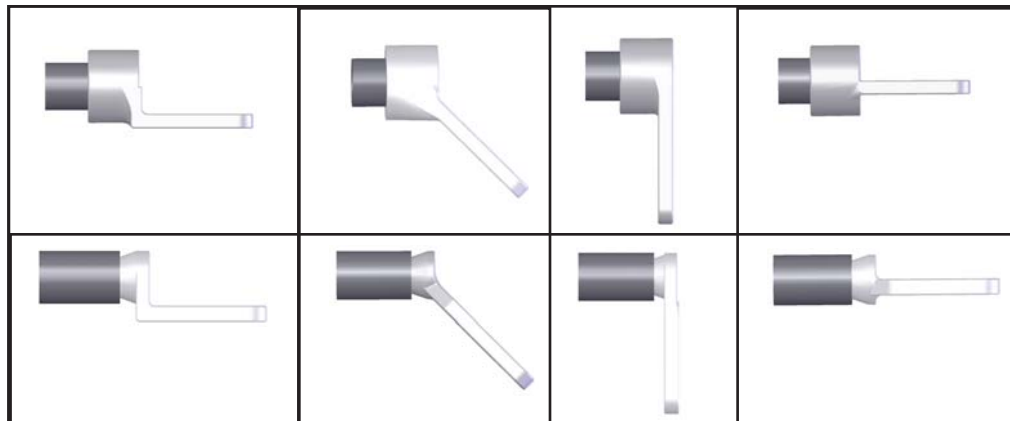
ANGLED
(AS REQUIRED)

90 DEGREE
(USE SUFFIX -90)

CENTER FORMED
(USE SUFFIX -CF)

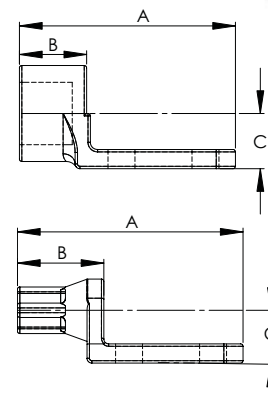
EXTERNAL
(USE SUFFIX -E)

INTERNAL
(USE SUFFIX -I)



ALUMINUM WELDMENT CONNECTORS
PIPE TO FLAT PAD

CATALOG NUMBER	PIPE SIZE IPS	PAD STYLE	DIMENSIONS IN INCHES			PAD THICKNESS
			A	B	C	
18-101	1/2	B	4	1	1	3/8
18-102	1/2	C	4	1	1	3/8
18-103	1/2	D	5	1	1	3/8
18-104	3/4	B	4	1	1 1/8	3/8
18-105	3/4	C	4	1	1 1/8	3/8
18-106	3/4	D	5	1	1 1/8	3/8
18-107	1	B	5	1 1/4	1 3/16	3/8
18-108	1	C	5	1 1/4	1 3/16	3/8
18-109	1	D	5	1 1/4	1 3/16	3/8
18-110	1 1/4	B	5	1 1/4	1 3/8	3/8
18-111	1 1/4	C	5	1 1/4	1 3/8	3/8
18-112	1 1/4	D	5 1/4	1 1/4	1 3/8	3/8
18-113	1 1/2	B	5	1 1/2	1 1/2	1/2
18-114	1 1/2	C	5	1 1/2	1 1/2	1/2
18-115	1 1/2	D	6 1/4	1 1/2	1 1/2	1/2
18-116	2	B	5 1/2	1 3/4	1 3/4	1/2
18-117	2	C	5 1/2	1 3/4	1 3/4	1/2
18-118	2	D	6	1 3/4	1 3/4	1/2
18-119	2 1/2	B	5	2	2	1/2
18-120	2 1/2	C	5 1/2	2	2	1/2
18-121	2 1/2	D	7	2	2	1/2
18-122	3	B	6	2 1/4	2 3/8	5/8
18-123	3	C	6	2 1/4	2 3/8	5/8
18-124	3	D	6	2 1/4	2 3/8	5/8
18-125	3 1/2	B	5 1/2	2 1/2	2 5/8	3/4
18-126	3 1/2	C	5 1/2	2 1/2	2 5/8	3/4
18-127	3 1/2	D	6 1/2	2 1/2	2 5/8	3/4
18-128	4	B	6	2 1/2	2 7/8	3/4
18-129	4	C	6	2 1/2	2 7/8	3/4
18-130	4	D	7	2 1/2	2 7/8	3/4
18-131	4 1/2	B	5 3/4	2 3/4	3 1/8	3/4
18-132	4 1/2	C	5 3/4	2 3/4	3 1/8	3/4
18-133	4 1/2	D	6 3/4	2 3/4	3 1/8	3/4
18-134	5	B	6 3/4	2 3/4	3 3/8	1
18-135	5	C	6 3/4	2 3/4	3 3/8	1
18-136	5	D	7 3/4	2 3/4	3 3/8	1
18-137	6	B	6 3/4	3	3 3/4	1 1/8
18-138	6	C	6 3/4	3	3 3/4	1 1/8
18-139	6	D	7 3/4	3	3 3/4	1 1/8



Cast of a lightweight and corrosion-resistant aluminum alloy, the Type WAT secures a pipe to a flat bar bus more permanently and economically than other terminal connectors.

Side-formed NEMA pads are standard.

Any special tongue features will be readily provided if designated by the addition of a suffix to the catalog number. If, for example, a center-formed tongue were requested for catalog number 18-101, that number should appear on the order as 18-101-CF. Similarly, a 45 angle tongue for the same catalog number should be written 18-101-45.