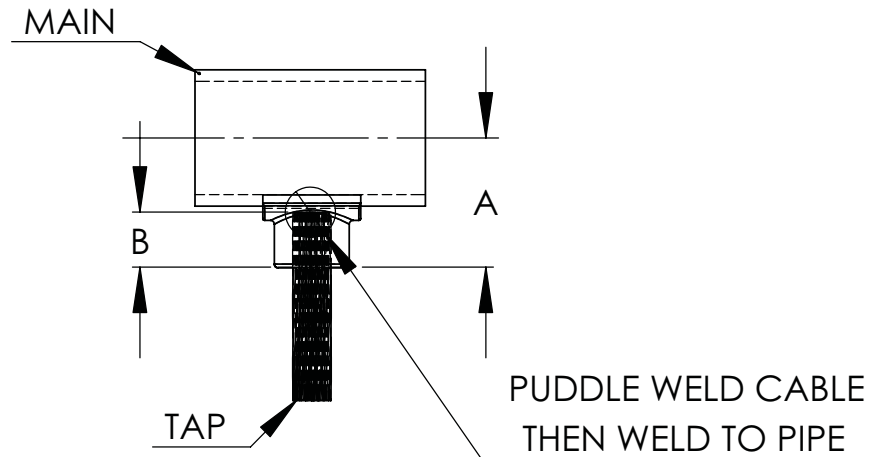
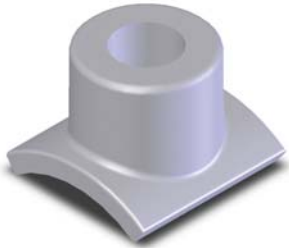


## SECTION

## 18-11

ALUMINUM WELDMENT CONNECTORS  
PIPE TO CABLE, TEE

An economical and dependable method of connecting a tee tap to a pipe main, the Type WTC is cast of a light-weight aluminum alloy for high conductivity and natural resistance to corrosion and stress.

\* Specify cable size as a suffix.

Example: 2" IPS main to a 477AAC tap, 18-828-477AAC



ALUMINUM WELDMENT CONNECTORS PIPE TO CABLE, TEE			
CATALOG NUMBER	PIPE MAIN IPS	DIMENSIONS IN INCHES	
		A	B
18-788-*	1/2	1 1/2	3/4
18-796-*	3/4	1 5/8	3/4
18-804-*	1	2	3/4
18-812-*	1 1/4	2 1/8	1 1/4
18-820-*	1 1/2	2 1/2	1 1/4
18-828-*	2	2 1/2	1 1/4
18-845-*	2 1/2	3 1/8	1 1/4
18-862-*	3	3 1/8	1 1/2
18-871-*	3 1/2	3 1/2	1 1/2
18-884-*	4	3 3/4	1 1/2
18-897-*	4 1/2	4	1 1/2
18-910-*	5	4 3/8	1 3/4
18-922-*	6	5	1 3/4