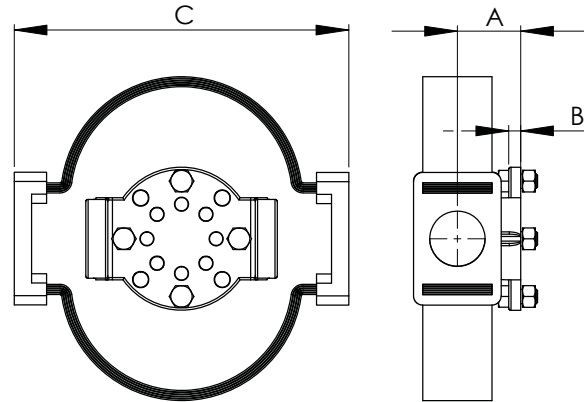


SECTION

18-13

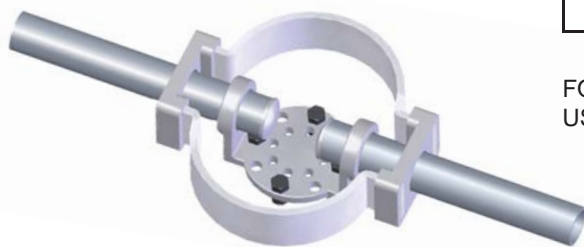
ALUMINUM WELDMENT CONNECTORS
EXPANSION COUPLER SUPPORT

In addition to featuring a lightweight and corrosion-resistant aluminum alloy as well as economy and permanence in joining bus supports, the type WES also compensates for temperature variations and thereby protects equipment bushings, switch gear, and insulators from expanding or contracting bus pressures.

The flexible shunts of laminated soft aluminum are designed to withstand the maximum current of the bus it connects.

The aluminum shunts are factory welded into the castings.

CATALOG NUMBER	MOUNTING BOLT CIRCLE	PIPE SIZE IPS	DIMENSIONS IN INCHES		
			A	B	C
18-1078	3	1/2	1 3/4	3/8	14
18-1079	5	1/2	2 1/8	1/2	16
18-1080	3	3/4	2	3/8	14
18-1081	5	3/4	2 1/4	1/2	16
18-1082	3	1	2	3/8	14
18-1083	5	1	2 1/4	1/2	16
18-1084	3	1 1/4	2 1/4	3/8	14
18-1085	5	1 1/4	2 3/8	1/2	16
18-1086	3	1 1/2	2 1/2	3/8	14
18-1087	5	1 1/2	2 1/2	1/2	16
18-1088	3	2	2 3/4	1/2	14
18-1089	5	2	2 3/4	1/2	16
18-1090	3	2 1/2	3 1/8	1/2	14
18-1091	5	2 1/2	3 1/8	1/2	16
18-1092	3	3	3 5/8	1/2	14
18-1093	5	3	3 5/8	1/2	16
18-1094	3	3 1/2	4	1/2	14
18-1095	5	3 1/2	4	1/2	16
18-1096	3	4	4 1/2	1/2	14
18-1097	5	4	4 1/2	1/2	16
18-1098	3	4 1/2	4 3/4	1/2	14
18-1099	5	4 1/2	4 3/4	1/2	16
18-1100	3	5	5	1/2	14
18-1101	5	5	5	1/2	16
18-1102	3	6	5 1/2	1/2	14
18-1103	5	6	5 1/2	1/2	16



FOR EHPS (SCH80) INTERNAL PIPE FITTINGS
USE SUFFIX (H). EX.18-1103H