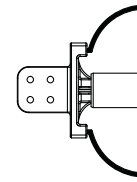
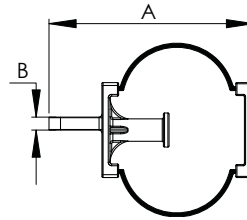
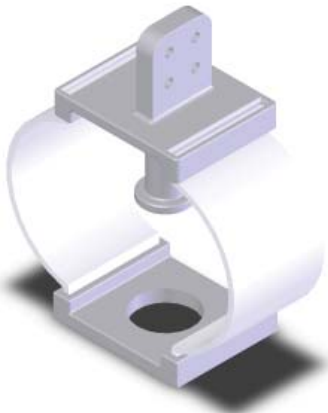


SECTION

18-15

ALUMINUM WELDMENT CONNECTORS
EXPANSION TERMINAL TO PIPE

FOR PAD ROTATED
90 DEGREES USE SUFFIX (V)
EXAMPLE 18-1139V

An economical connector for making a permanent union between a terminal and a tubular bus, the type AETF cast of a lightweight and corrosion-resistant aluminum compensates for temperature variations and thus protects equipment bushings, switch gear, and insulators from expanding or contracting bus pressures.

Flexible shunts of laminated soft aluminum are designed for carrying the maximum current of the bus it connects.

The aluminum shunts are factory welded into the castings.

FOR EHPS (SCH80) INTERNAL PIPE FITTINGS USE SUFFIX (H). EX.18-1155H

CATALOG NUMBER	PIPE SIZE IPS	PAD STYLE	DIMENSIONS IN INCHES	
			A	B
18-1117	1/2	B	16	7/16
18-1118	1/2	C	16	7/16
18-1119	1/2	D	17	7/16
18-1120	3/4	B	16	7/16
18-1121	3/4	C	16	7/16
18-1122	3/4	D	17	7/16
18-1123	1	B	16	1/2
18-1124	1	C	16	1/2
18-1125	1	D	17	1/2
18-1126	1 1/4	B	16	9/16
18-1127	1 1/4	C	16	9/16
18-1128	1 1/4	D	17	9/16
18-1129	1 1/2	B	16	5/8
18-1130	1 1/2	C	16	5/8
18-1131	1 1/2	D	17	5/8
18-1132	2	B	16	5/8
18-1133	2	C	16	5/8
18-1134	2	D	17	5/8
18-1135	2 1/2	B	16	11/16
18-1136	2 1/2	C	16	11/16
18-1137	2 1/2	D	17	11/16
18-1138	3	B	16	7/8
18-1139	3	C	16	7/8
18-1140	3	D	17	7/8
18-1141	3 1/2	B	16	1
18-1142	3 1/2	C	16	1
18-1143	3 1/2	D	17	1
18-1144	4	B	16	1
18-1145	4	C	16	1
18-1146	4	D	17	1
18-1147	4 1/2	B	16	1
18-1148	4 1/2	C	16	1
18-1149	4 1/2	D	17	1
18-1150	5	B	16	1
18-1151	5	C	16	1
18-1152	5	D	17	1
18-1153	6	B	16	1 1/8
18-1154	6	C	16	1 1/8
18-1155	6	D	20	1 1/8