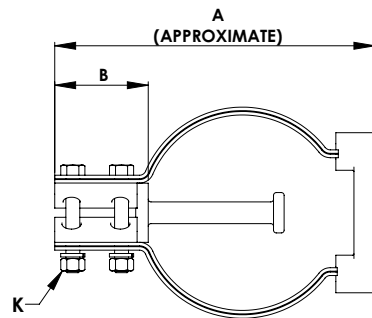


ALUMINUM WELDMENT CONNECTORS EXPANSION STUD TO PIPE

SECTION

18-16



CATALOG NUMBER	STUD SIZE	PIPE SIZE IPS	DIMENSIONS IN INCHES		
			A	B	K
18-1156	1/2-13	1/2	12	2 1/2	1/2
18-1157	1/2-13	3/4	12	2 1/2	1/2
18-1158	1/2-13	1	12	2 1/2	1/2
18-1159	3/4-16	1/2	12	2 1/2	1/2
18-1160	3/4-16	3/4	12	2 1/2	1/2
18-1161	3/4-16	1	12	2 1/2	1/2
18-1162	1-14	1/2	12	2 1/2	1/2
18-1163	1-14	3/4	12	2 1/2	1/2
18-1164	1-14	1	12	2 1/2	1/2
18-1165	1-14	1 1/4	12	2 1/2	1/2
18-1166	1 1/8-12	1/2	12	3	1/2
18-1167	1 1/8-12	3/4	12	3	1/2
18-1168	1 1/8-12	1	12	3	1/2
18-1169	1 1/8-12	1 1/4	12	3	1/2
18-1170	1 1/4-12	1/2	12	3	1/2
18-1171	1 1/4-12	3/4	12	3	1/2
18-1172	1 1/4-12	1	12	3	1/2
18-1173	1 1/4-12	1 1/4	12	3	1/2
18-1174	1 1/4-12	1 1/2	12	3	1/2
18-1175	1 1/2-12	1/2	12	3	1/2
18-1176	1 1/2-12	3/4	12	3	1/2
18-1177	1 1/2-12	1	12	3	1/2
18-1178	1 1/2-12	1 1/4	12	3	1/2
18-1179	1 1/2-12	1 1/2	12	3	1/2
18-1180	1 1/2-12	2	12	3	1/2
18-1181	1 3/4-12	3/4	12	3	1/2
18-1182	1 3/4-12	1	12	3	1/2
18-1183	1 3/4-12	1 1/4	12	3	1/2
18-1184	1 3/4-12	1 1/2	12	3	1/2
18-1185	1 3/4-12	2	12	3	1/2
18-1186	2-12	1	12	3	1/2
18-1187	2-12	1 1/4	12	3	1/2
18-1188	2-12	1 1/2	12	3	1/2
18-1189	2-12	2	12	3	1/2
18-1190	2-12	2 1/2	12	3	5/8
18-1191	2 1/4-12	1 1/4	12	3	1/2

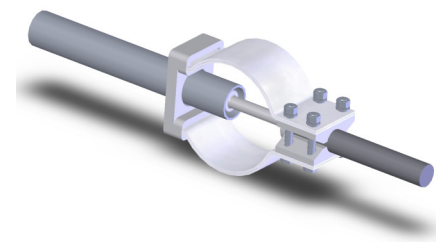
The type WEST is an economical means of joining a threaded bronze stud to a pipe bus and offers the added feature of being able to compensate for temperature variations. It protects equipment bushings, switch gear, and insulators from expanding or contracting bus pressures.

A lightweight and corrosion resistant aluminum alloy casting makes this connector durable and dependable in the field.

Flexible shunts of laminated soft aluminum are designed to withstand the maximum current of the bus.

The aluminum shunts are factory welded into the castings.

Unthreaded studs or stud sizes not listed must be specified with the order.



FOR EHPS (SCH80) INTERNAL PIPE FITTINGS USE SUFFIX (H). EX.18-1191H

Continued on next page

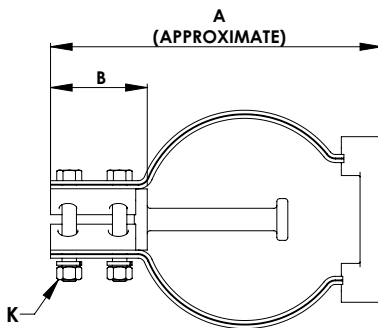
SECTION

18-16

ALUMINUM WELDMENT CONNECTORS
EXPANSION STUD TO PIPE

CONTINUED FROM PROVISIONS PAGE

CATALOG NUMBER	STUD SIZE	PIPE SIZE IPS	DIMENSIONS IN INCHES		
			A	B	K
18-1192	2 1/4-12	1 1/2	12	3	1/2
18-1193	2 1/4-12	2	12	3	1/2
18-1194	2 1/4-12	2 1/2	14	3	5/8
18-1195	2 1/2-12	1 1/2	12	3	1/2
18-1196	2 1/2-12	2	12	3	1/2
18-1197	2 1/2-12	2 1/2	14	3	5/8
18-1198	2 1/2-12	3	14	3	5/8
18-1199	2 3/4-12	1 1/2	12	3 1/2	1/2
18-1200	2 3/4-12	2	12	3 1/2	1/2
18-1201	2 3/4-12	2 1/2	14	3 1/2	5/8
18-1202	2 3/4-12	3	14	3 1/2	5/8
18-1203	2 3/4-12	3 1/2	14	3 1/2	5/8
18-1204	3-12	2	12	3 1/2	1/2
18-1205	3-12	2 1/2	14	3 1/2	5/8
18-1206	3-12	3	14	3 1/2	5/8
18-1207	3-12	3 1/2	14	3 1/2	5/8
18-1208	3-12	4	14	3 1/2	5/8
18-1209	3 1/4-12	2 1/2	14	3 1/2	5/8
18-1210	3 1/4-12	3	14	3 1/2	5/8
18-1211	3 1/4-12	3 1/2	14	3 1/2	5/8
18-1212	3 1/4-12	4	14	3 1/2	5/8
18-1213	3 1/2-12	2 1/2	14	3 1/2	5/8
18-1214	3 1/2-12	3	14	3 1/2	5/8
18-1215	3 1/2-12	3 1/2	14	3 1/2	5/8
18-1216	3 1/2-12	4	14	3 1/2	5/8
18-1217	4-12	2 1/2	14	3 1/2	5/8
18-1218	4-12	3	14	3 1/2	5/8
18-1219	4-12	3 1/2	14	3 1/2	5/8
18-1220	4-12	4	14	3 1/2	5/8



FOR EHPS (SCH80) INTERNAL PIPE
FITTINGS USE SUFFIX (H). EX. 18-1220H