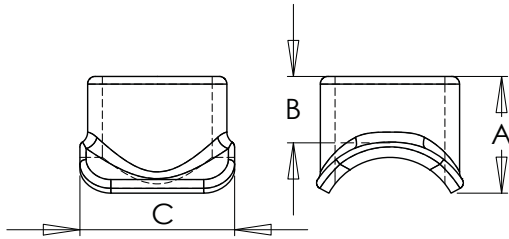


# ALUMINUM WELDMENT PIPE TO PIPE TEE CONNECTORS

SECTION

18-2



CATALOG NUMBER	IPS MAIN	IPS TAP	DIMENSIONS IN INCHES		
			A	B	C
18-140	1/2	1/2	1 3/4	1	2
18-141	3/4	1/2	1 13/16	1	2
18-142	3/4	3/4	1 13/16	1	2 1/4
18-143	1	1/2	2	1	2
18-144	1	3/4	2	1	2 1/4
18-145	1	1	2	1 3/8	2 1/2
18-146	1 1/4	1/2	2 1/4	1	2
18-147	1 1/4	3/4	2 1/4	1	2 1/4
18-148	1 1/4	1	2 1/2	1 1/4	2 1/2
18-149	1 1/4	1 1/4	2 1/4	1 3/8	2 3/4
18-150	1 1/2	1/2	2 3/8	1	2
18-151	1 1/2	3/4	2 3/8	1	2 1/4
18-152	1 1/2	1	2 5/8	1 1/4	2 1/2
18-153	1 1/2	1 1/4	2 5/8	1 1/4	3
18-154	1 1/2	1 1/2	2 3/8	3 1/8	1 3/4
18-155	2	1/2	2 1/2	1	2
18-156	2	3/4	1 3/8	1	2 1/4
18-157	2	1	1 7/8	1 3/8	2 1/2
18-158	2	1 1/4	2 5/8	1 1/2	3 3/8
18-159	2	1 1/2	2	1	3
18-160	2	2	1 7/8	1	3 1/2
18-161	2 1/2	1/2	2 7/8	1	2
18-162	2 1/2	3/4	1 7/8	1	2 1/2
18-163	2 1/2	1	1 7/8	1 3/8	2 1/2
18-164	2 1/2	1 1/4	2 3/4	1 1/4	3
18-165	2 1/2	1 1/2	1 3/4	7/8	3 1/4
18-166	2 1/2	2	1 7/8	1	3 1/2
18-167	2 1/2	2 1/2	3	2 1/4	4 1/2
18-168	3	1/2	3 1/4	1	2
18-169	3	3/4	3 1/4	1	2 1/4
18-170	3	1	1 7/8	1 3/8	2 1/2
18-171	3	1 1/4	3 3/8	1 1/4	3
18-172	3	1 1/2	2 1/4	3 3/8	1 1/2
18-173	3	2	3 1/4	1 3/4	3 7/8
18-174	3	2 1/2	3 1/8	2 1/8	4 1/4
18-175	3	3	4 1/4	2 1/4	5 7/8
18-176	3 1/2	1/2	3 1/2	1	2
18-177	3 1/2	3/4	3 1/2	1	2 1/4
18-178	3 1/2	1	1 7/8	1 1/4	2 5/8
18-179	3 1/2	1 1/4	3 5/8	1 1/4	3
18-180	3 1/2	1 1/2	4	1 1/2	3 1/4
18-181	3 1/2	2	3 1/4	1 3/4	3 7/8
18-182	3 1/2	2 1/2	3 1/8	2 1/8	4 1/4
18-183	3 1/2	3	4 5/8	2 1/4	5
18-184	3 1/2	3 1/2	5	2 1/2	5 1/2

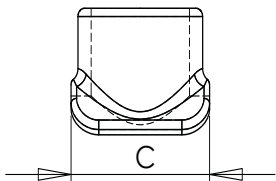
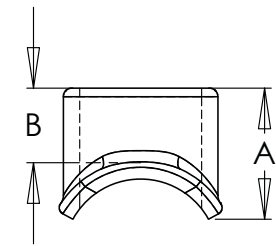
For a secure and reliable connection between a pipe main and a tubular tap at a 90 degree angle, the type TTW makes a particularly effective and economical choice.

It is cast of a lightweight and corrosion-resistant aluminum alloy.



Continued on next page

Continued from previous page



CATALOG NUMBER	IPS MAIN	IPS TAP	DIMENSIONS IN INCHES		
			A	B	C
18-185	4	1/2	3 3/4	1	2
18-186	4	3/4	3 3/4	1	2 1/2
18-187	4	1	2 3/4	1	3
18-188	4	1 1/4	3 1/2	1 1/4	3
18-189	4	1 1/2	1 3/4	7/8	3 1/4
18-190	4	2	2 3/8	1 3/4	3 1/2
18-191	4	2 1/2	4	2	4 1/4
18-192	4	3	3 3/4	2 1/4	5
18-193	4	3 1/2	4 1/2	2 1/2	5 1/2
18-194	4	4	4 1/2	2 3/8	6
18-195	4 1/2	1/2	3 3/4	1	2
18-196	4 1/2	3/4	3 3/4	1	2 1/4
18-197	4 1/2	1	4	1 1/4	2 1/2
18-198	4 1/2	1 1/4	4	1 1/4	3
18-199	4 1/2	1 1/2	4 1/4	1 1/2	3 1/4
18-200	4 1/2	2	4 1/4	1 3/4	3 1/2
18-201	4 1/2	2 1/2	4 3/8	2	4 1/4
18-202	4 1/2	3	4 1/2	2 1/4	5
18-203	4 1/2	3 1/2	5 1/2	2 1/2	5 1/2
18-204	4 1/2	4	5 1/2	2 1/2	6
18-205	4 1/2	4 1/2	5 3/4	2 3/4	6 3/4
18-206	5	1/2	4 3/8	1	2
18-207	5	3/4	4 3/8	1	2 1/4
18-208	5	1	4 1/2	1 1/4	2 1/2
18-209	5	1 1/4	4 5/8	1 1/4	3
18-210	5	1 1/2	4 7/8	1 1/2	3 1/4
18-211	5	2	5 1/8	1 3/4	3 1/2
18-212	5	2 1/2	5 1/8	2	5 1/4
18-213	5	3	5 1/4	2 1/4	5
18-214	5	3 1/2	5 1/2	2 1/2	5 1/2
18-215	5	4	4 1/2	2 1/2	6
18-216	5	4 1/2	5 3/4	2 3/4	6 3/4
18-217	5	5	5 3/4	2 1/2	8 1/2
18-218	6	1/2	4 3/4	1	2
18-219	6	3/4	4 3/4	1	2 1/4
18-220	6	1	5	1 1/4	2 1/2
18-221	6	1 1/4	5	1 1/4	3
18-222	6	1 1/2	5 1/4	1 1/2	3 1/4
18-223	6	2	5 1/2	1	3 1/2
18-224	6	2 1/2	5 1/2	2	4 1/4
18-225	6	3	5 3/4	2 1/4	5
18-226	6	3 1/2	6	2 1/2	5 1/2
18-227	6	4	6	2 1/2	6
18-228	6	4 1/2	6 1/4	2 3/4	6 3/4
18-229	6	5	7	2 3/8	8
18-230	6	6	6 1/2	2 1/2	8 1/2