

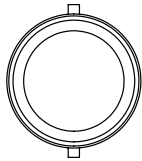
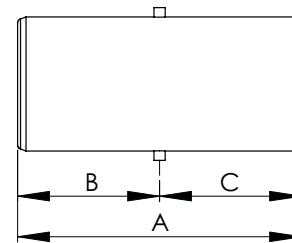
# ALUMINUM WELDMENT CONNECTORS PIPE TO PIPE COUPLER-REDUCER

SECTION

18-6

## ALUMINUM WELDMENT CONNECTORS PIPE TO PIPE COUPLER-REDUCER

SPS CATALOG NUMBER	EH SPS CATALOG NUMBER	IPS MAIN	IPS TAP	DIMENSIONS IN INCHES		
				A	B	C
18-504	8-505	1/2	1/2	3	1 1/2	1 1/2
18-506	-507	3/4	1/2	3 1/4	1 3/4	1 1/2
18-508	-509	3/4	3/4	3 1/2	1 3/4	1 3/4
18-510	-511	1	1/2	3 1/2	2	1 1/2
18-512	-513	1	3/4	3 3/4	2	1 3/4
18-514	-515	1	1	4 1/2	2	2
18-516	-517	1 1/4	1/2	4	2 1/2	1 1/2
18-518	-519	1 1/4	3/4	4 1/4	2 1/2	1 3/4
18-520	-521	1 1/4	1	4 1/2	2 1/2	2
18-522	-523	1 1/4	1 1/4	5	2 1/2	2 1/2
18-524	-525	1 1/2	3/4	4 3/4	3	1 3/4
18-526	-527	1 1/2	1	5	3	2
18-528	-529	1 1/2	1 1/4	5 1/2	3	2 1/2
18-530	-531	1 1/2	1 1/2	6 1/4	3 1/8	3 1/8
18-532	-533	2	1	6	4	2
18-534	-535	2	1 1/4	6 1/2	4	2 1/2
18-536	-537	2	1 1/2	7	4	3
18-538	-539	2	2	7	3.5	3.5
18-540	-541	2 1/2	1 1/4	6	3	3
18-542	-543	2 1/2	1 1/2	6	3	3
18-544	-545	2 1/2	2	6	3	3
18-546	-547	2 1/2	2 1/2	6 3/4	3 3/8	3 3/8
18-548	-549	3	1 1/2	6	3	3
18-550	-551	3	2	6 1/2	3 1/2	3
18-552	-553	3	2 1/2	6 1/2	3 1/2	3
18-554	-555	3	3	6	3	3
18-556	-557	3 1/2	2	10	6	4
18-558	-559	3 1/2	2 1/2	11	6	5
18-560	-561	3 1/2	3	12	6	6
18-562	-563	3 1/2	3 1/2	12	6	6
18-564	-565	4	2	11	7	4
18-566	-567	4	2 1/2	12	7	5
18-568	-569	4	3	13	7	6
18-570	-571	4	3 1/2	13	7	6
18-572	-573	4	4	12	6	6
18-574	-575	4 1/2	2	11	7	4
18-576	-577	4 1/2	2 1/2	12	7	5
18-578	-579	4 1/2	3	13	7	6
18-580	-581	4 1/2	3 1/2	13	7	6
18-582	-583	4 1/2	4	14	7	7
18-584	-585	4 1/2	4 1/2	14	7	7
18-586	-587	5	2 1/2	13	8	5
18-588	-589	5	3	14	8	6
18-590	-591	5	3 1/2	14	8	6
18-592	-593	5	4	15	8	7
18-594	-595	5	4 1/2	15	8	7
18-596	-597	5	5	16	8	8
18-598	-599	6	3	15	9	6
18-600	-601	6	3 1/2	15	9	6
18-602	-603	6	4	16	9	7
18-604	-605	6	4 1/2	16	9	7
18-606	-607	6	5	17	9	8
18-608	-609	6	6	18	9	9



Cast of a lightweight and corrosion-resistant aluminum alloy, the Type WCT and Type WCTH make reliable, economical, and permanent connections between tubes of the same or different sizes joined end on end.

