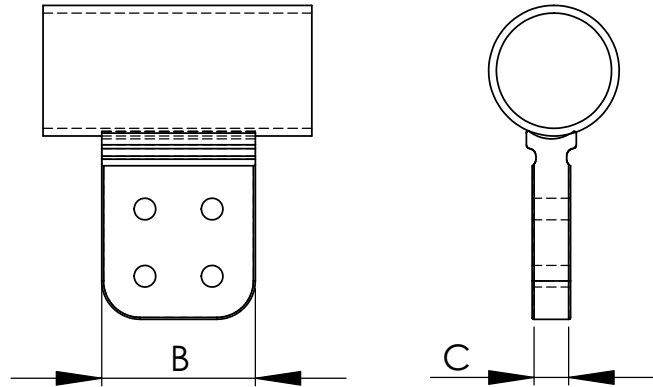
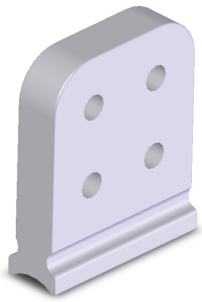


SECTION

18-7

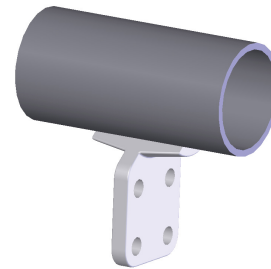
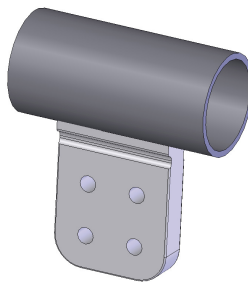
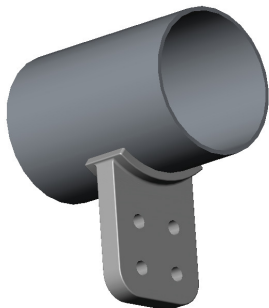
ALUMINUM WELDMENT CONNECTORS
PIPE TO FLAT PAD TEE



For a secure and reliable connection between a pipe bus and a flat pad to which a choice of fittings may be bolted, the Type WTD tee connector is a particularly adaptable, efficient and economical choice. It is cast of a light-weight and corrosion-resistant aluminum alloy for dependability and durability in the field.

ALUMINUM WELDMENT CONNECTORS PIPE TO FLAT PAD TEE CONNECTORS				
CATALOG NUMBER	PIPE SIZE IPS	PAD STYLE	DIMENSIONS IN INCHES	
			B	C
18-622-WR	1-3	B	2 1/2	1/2
18-623-WR	1-3	C	3 1/2	5/8
18-624-WR	1-3	D	4	3/4
18-640-WR	3-6	B	2 1/2	3/4
18-641-WR	3-6	C	3 1/2	3/4
18-642-WR	3-6	D	4	1
18-622-WR-90	1-3	B	2 1/2	1/2
18-623-WR-90	1-3	C	3 1/2	1/2
18-624-WR-90	1-3	D	4	1/2
18-640-WR-90	3-6	B	2 1/2	3/4
18-641-WR-90	3-6	C	3 1/2	3/4
18-642-WR-90	3-6	D	4	1

For applications that require a full saddle weld please indicate the actual pipe size. For example, a 4" pipe to a 90 deg 4x4 pad would appear as a 18-642-90(4"IPS)



FOR 90 DEGREE
USE SUFFIX -90