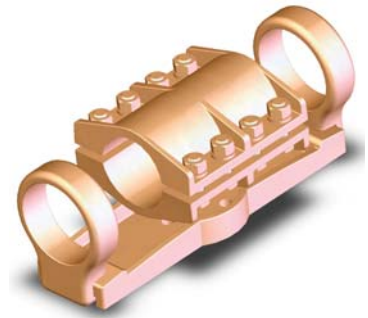
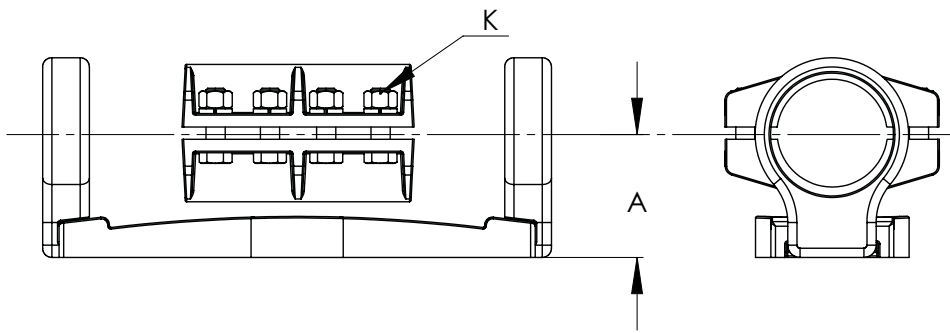


BRONZE BUS SUPPORTS SLIDING COUPLER SUPPORT

SECTION

19-10



| BRONZE BUS SUPPORTS SLIDING COUPLER SUPPORT | | | | |
|--|-------------------------|------------------|----------------------|-----|
| CATALOG NUMBER | MOUNTING BOLT CIRCLE | PIPE SIZE IPS | DIMENSIONS IN INCHES | |
| | | | A | B |
| 19-1293 | 3 | 1/2 | 1 3/4 | 3/8 |
| 19-1294 | 5 | 1/2 | 2 1/8 | 3/8 |
| 19-1295 | 3 | 3/4 | 2 | 3/8 |
| 19-1296 | 5 | 3/4 | 2 1/4 | 3/8 |
| 19-1297 | 3 | 1 | 2 | 3/8 |
| 19-1298 | 5 | 1 | 2 1/4 | 3/8 |
| 19-1299 | 3 | 1 1/4 | 2 1/4 | 1/2 |
| 19-1300 | 5 | 1 1/4 | 2 3/8 | 1/2 |
| 19-1301 | 3 | 1 1/2 | 2 1/2 | 1/2 |
| 19-1302 | 5 | 1 1/2 | 2 1/2 | 1/2 |
| 19-1303 | 3 | 2 | 2 3/4 | 1/2 |
| 19-1304 | 5 | 2 | 2 3/4 | 1/2 |
| 19-1305 | 3 | 2 1/2 | 3 1/4 | 1/2 |
| 19-1306 | 5 | 2 1/2 | 3 1/4 | 1/2 |
| 19-1307 | 3 | 3 | 3 3/4 | 5/8 |
| 19-1308 | 5 | 3 | 3 3/4 | 5/8 |
| 19-1309 | 3 | 3 1/2 | 4 | 5/8 |
| 19-1310 | 5 | 3 1/2 | 4 | 5/8 |
| 19-1311 | 3 | 4 | 4 1/2 | 5/8 |
| 19-1312 | 5 | 4 | 4 1/2 | 5/8 |
| 19-1313 | 3 | 4 1/2 | 4 3/4 | 5/8 |
| 19-1314 | 5 | 4 1/2 | 4 3/4 | 5/8 |
| 19-1315 | 3 | 5 | 5 1/4 | 5/8 |
| 19-1316 | 5 | 5 | 5 1/4 | 5/8 |
| 19-1317 | 3 | 6 | 5 1/2 | 5/8 |
| 19-1318 | 5 | 6 | 5 1/2 | 5/8 |

Useful in long runs of tubing bus, the Type BSCS effectively protects the insulator it is mounted on from the expansion and contraction pressures due to temperature variations. In addition, the connector cast of high strength copper alloy couples tubing of the same size. It features corrosion-resistant silicon bronze clamping hardware and captivated bolt heads for installation. Steel galvanized bolts and lockwashers are included for mounting the bus support to its insulator cap. For purposes of rotation and angular adjustment, the base of the bus support has eight holes.

