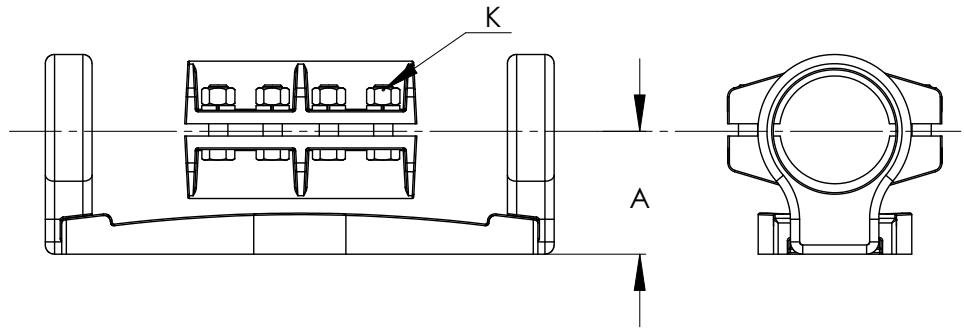
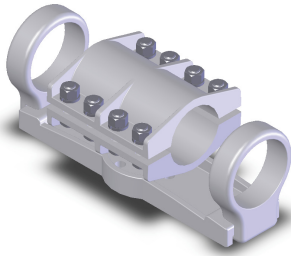


## SECTION

## 19-10A

ALUMINUM BUS SUPPORTS  
SLIDING COUPLER SUPPORT

Particularly useful in long runs of pipe bus, the Type ASCS couples tubing of the same size and effectively protects the insulator it is mounted on from the expansion and contraction pressures due to temperature variations. Made of a durable, lightweight aluminum alloy, it includes bolts, nuts, and lockwashers of high-tensile aluminum to insure clamping efficiency and resistance to corrosion in the field. For mounting to the insulator cap, steel galvanized bolts and lockwashers are provided. All bolt heads are captivated to allow for single wrench installation. To facilitate any necessary rotation or angular adjustment, the base of the bus support features eight holes.

ALUMINUM  
BUS SUPPORTS SLIDING COUPLER SUPPORT

CATALOG NUMBER	MOUNTING BOLT CIRCLE	PIPE SIZE IPS	DIMENSIONS IN INCHES	
			A	K
19-1319	3	1/2	1 3/4	1/2
19-1320	5	1/2	2 1/8	1/2
19-1321	3	3/4	2	1/2
19-1322	5	3/4	2 1/4	1/2
19-1323	3	1	2	1/2
19-1324	5	1	2 1/4	1/2
19-1325	3	1 1/4	2 1/4	1/2
19-1326	5	1 1/4	2 3/8	1/2
19-1327	3	1 1/2	2 1/2	1/2
19-1328	5	1 1/2	2 1/2	1/2
19-1329	3	2	2 3/4	1/2
19-1330	5	2	2 3/4	1/2
19-1331	3	2 1/2	3 1/8	5/8
19-1332	5	2 1/2	3 1/8	5/8
19-1333	3	3	3 5/8	5/8
19-1334	5	3	3 5/8	5/8
19-1335	3	3 1/2	4	5/8
19-1336	5	3 1/2	4	5/8
19-1337	3	4	4 1/2	5/8
19-1338	5	4	4 1/2	5/8
19-1339	3	4 1/2	4 3/4	5/8
19-1340	5	4 1/2	4 3/4	5/8
19-1341	3	5	5	5/8
19-1342	5	5	5	5/8
19-1343	3	6	5 1/2	5/8
19-1344	5	6	5 1/2	5/8

