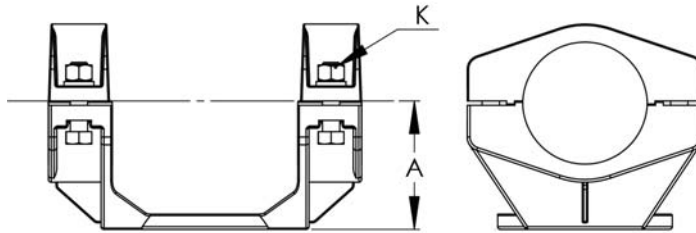


# BRONZE BUS SUPPORTS

## OPEN BASES

SECTION

19-2



CATALOG NUMBER	MOUNTING BOLT CIRCLE	PIPE SIZE IPS	DIMENSIONS IN INCHES	
			A	K
19-153	3	1/2	1 3/4	3/8
19-154	5	1/2	2 1/8	3/8
19-155	3	3/4	2	1/2
19-156	5	3/4	2 1/4	1/2
19-157	3	1	2	1/2
19-158	5	1	2 1/4	1/2
19-159	3	1 1/4	2 1/4	1/2
19-160	5	1 1/4	2 3/8	1/2
19-161	3	1 1/2	2 1/2	1/2
19-162	5	1 1/2	2 1/2	1/2
19-163	3	2	2 3/4	1/2
19-164	5	2	2 3/4	1/2
19-165	3	2 1/2	3 1/8	5/8
19-166	5	2 1/2	3 1/8	5/8
19-167	3	3	3 5/8	5/8
19-168	5	3	3 5/8	5/8
19-169	3	3 1/2	4	5/8
19-170	5	3 1/2	4	5/8
19-171	3	4	4 1/2	5/8
19-172	5	4	4 1/2	5/8
19-173	3	4 1/2	4 7/8	5/8
19-174	5	4 1/2	4 7/8	5/8
19-175	3	5	5	5/8
19-176	5	5	5	5/8
19-177	3	6	5 1/2	5/8
19-178	5	6	5 1/2	5/8

For joining a bus to an insulator cap, the type BFSS proves a durable connector because of its high strength copper alloy casting.

Clamping hardware of silicon bronze enhances its strength and resistance to wear in the field.

To facilitate installation, all bolt heads are recessed. Also included are steel galvanized bolts and lockwashers for mounting to the insulator cap.

For rotation and angular adjustment, the base of the bus support features eight holes. Another feature of this connector is the reversible bus support cap which allows for either slip or tight-fit applications.

Static spring is standard.

