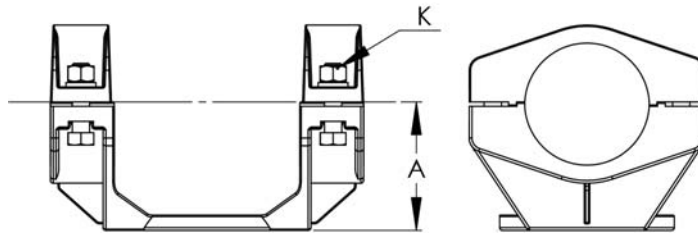


SECTION

19-2A

ALUMINUM BUS SUPPORTS
OPEN BASES

Connecting a bus to an insulator cap can be accomplished with ease and efficiency using the type AFSS. A connector made of a lightweight aluminum alloy, it includes high strength aluminum clamping hardware for dependability and steel galvanized bolts and lockwashers for proper mounting to the insulator cap. Recessed bolt heads allow single wrench installation.

The base of the bus support has eight holes for rotation and angular adjustment. Another feature of this connector is the reversible bus support cap which permits either slip or tight-fit applications.

Static spring is standard.

CATALOG NUMBER	MOUNTING BOLT CIRCLE	PIPE SIZE IPS	DIMENSIONS IN INCHES	
			A	K
19-179	3	1/2	1 3/4	1/2
19-180	5	1/2	2 1/8	1/2
19-181	3	3/4	2	1/2
19-182	5	3/4	2 1/4	1/2
19-183	3	1	2	1/2
19-184	5	1	2 1/4	1/2
19-185	3	1 1/4	2 1/4	1/2
19-186	5	1 1/4	2 3/8	1/2
19-187	3	1 1/2	2 1/2	1/2
19-188	5	1 1/2	2 1/2	1/2
19-189	3	2	2 3/4	1/2
19-190	5	2	2 3/4	1/2
19-191	3	2 1/2	3 1/8	5/8
19-192	5	2 1/2	3 1/8	5/8
19-193	3	3	3 5/8	1/2
19-194	5	3	3 5/8	1/2
19-195	3	3 1/2	4	5/8
19-196	5	3 1/2	4	5/8
19-197	3	4	4 1/2	5/8
19-198	5	4	4 1/2	5/8
19-199	3	4 1/2	4 7/8	5/8
19-200	5	4 1/2	4 7/8	5/8
19-201	3	5	5	5/8
19-202	5	5	5	5/8
19-203	3	6	5 1/2	5/8
19-204	5	6	5 1/2	5/8

Example:

For a 7" bolt circle, add the descriptor "7BC" into the product number.

EX: 19-204-7BC