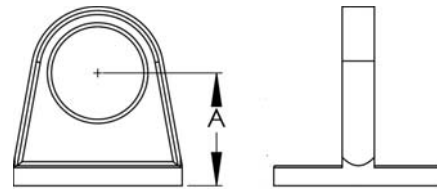


BRONZE/ALUMINUM BUS SUPPORTS SINGLE RING

SECTION

19-3

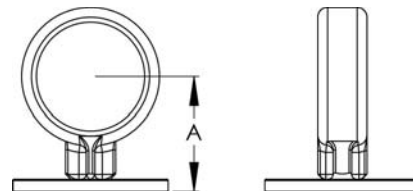


| BRONZE BUS SUPPORTS SINGLE RING | | | |
|------------------------------------|----------------------|---------------|----------------------|
| CATALOG NUMBER | MOUNTING BOLT CIRCLE | PIPE SIZE IPS | DIMENSIONS IN INCHES |
| | | | A |
| 19-205 | 3 | 1/2 | 1 3/4 |
| 19-206 | 5 | 1/2 | 2 1/8 |
| 19-207 | 3 | 3/4 | 2 |
| 19-208 | 5 | 3/4 | 2 1/4 |
| 19-209 | 3 | 1 | 2 |
| 19-210 | 5 | 1 | 2 1/4 |
| 19-211 | 3 | 1 1/4 | 2 1/4 |
| 19-212 | 5 | 1 1/4 | 2 3/8 |
| 19-213 | 3 | 1 1/2 | 2 1/2 |
| 19-214 | 5 | 1 1/2 | 2 1/2 |
| 19-215 | 3 | 2 | 2 3/4 |
| 19-216 | 5 | 2 | 2 3/4 |
| 19-217 | 3 | 2 1/2 | 3 1/8 |
| 19-218 | 5 | 2 1/2 | 3 1/8 |
| 19-219 | 3 | 3 | 3 5/8 |
| 19-220 | 5 | 3 | 3 5/8 |
| 19-221 | 3 | 3 1/2 | 4 |
| 19-222 | 5 | 3 1/2 | 4 |
| 19-223 | 3 | 4 | 4 1/2 |
| 19-224 | 5 | 4 | 4 1/2 |
| 19-225 | 3 | 4 1/2 | 4 7/8 |
| 19-226 | 5 | 4 1/2 | 4 7/8 |
| 19-227 | 3 | 5 | 5 |
| 19-228 | 5 | 5 | 5 |
| 19-229 | 3 | 6 | 5 1/2 |
| 19-230 | 5 | 6 | 5 1/2 |

A reliable connector for joining a bus to an insulator cap, the type BSB is cast of a high strength copper alloy and is used in slip fit applications.

This connector includes steel galvanized bolts and lockwashers for proper mounting to the insulator cap.

To allow rotation and angular adjustment, the base of the bus support has eight holes.



| ALUMINUM BUS SUPPORTS SINGLE RING | | | |
|--------------------------------------|----------------------|---------------|----------------------|
| CATALOG NUMBER | MOUNTING BOLT CIRCLE | PIPE SIZE IPS | DIMENSIONS IN INCHES |
| | | | A |
| 19-231 | 3 | 1/2 | 1 3/4 |
| 19-232 | 5 | 1/2 | 2 1/8 |
| 19-233 | 3 | 3/4 | 2 |
| 19-234 | 5 | 3/4 | 2 1/4 |
| 19-235 | 3 | 1 | 2 |
| 19-236 | 5 | 1 | 2 1/4 |
| 19-237 | 3 | 1 1/4 | 2 1/4 |
| 19-238 | 5 | 1 1/4 | 2 3/8 |
| 19-239 | 3 | 1 1/2 | 2 1/2 |
| 19-240 | 5 | 1 1/2 | 2 1/2 |
| 19-241 | 3 | 2 | 2 3/4 |
| 19-242 | 5 | 2 | 2 3/4 |
| 19-243 | 3 | 2 1/2 | 3 1/8 |
| 19-244 | 5 | 2 1/2 | 3 1/8 |
| 19-245 | 3 | 3 | 3 5/8 |
| 19-246 | 5 | 3 | 3 5/8 |
| 19-247 | 3 | 3 1/2 | 4 |
| 19-248 | 5 | 3 1/2 | 4 |
| 19-249 | 3 | 4 | 4 1/2 |
| 19-250 | 5 | 4 | 4 1/2 |
| 19-251 | 3 | 4 1/2 | 4 7/8 |
| 19-252 | 5 | 4 1/2 | 4 7/8 |
| 19-253 | 3 | 5 | 5 |
| 19-254 | 5 | 5 | 5 |
| 19-255 | 3 | 6 | 5 1/2 |
| 19-256 | 5 | 6 | 5 1/2 |

The rugged aluminum type ASB joins a bus to an insulator cap for slip fit applications.

Included are steel galvanized bolts and lockwashers for proper mounting to the insulator cap.

The base of the bus support has eight holes to permit rotation and angular adjustment.

Static spring is standard.



Example:

For a 7" bolt circle, add the descriptor "7BC" into the product number.

EX: 19-256-7BC