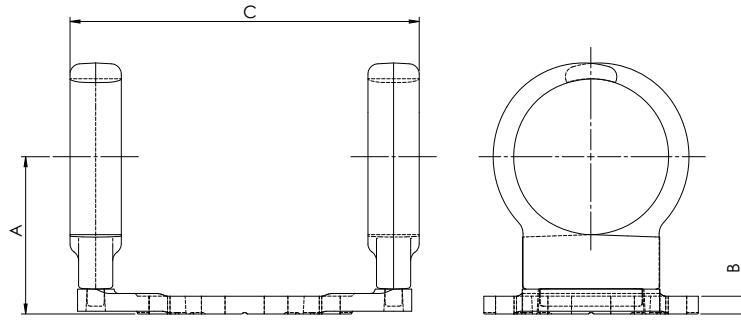
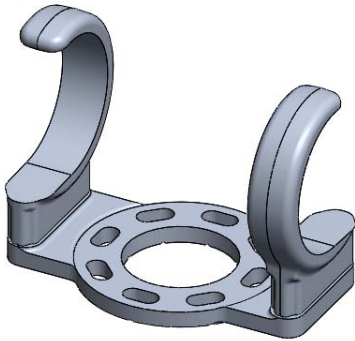


SECTION

19-4

**ALUMINUM
BUS SUPPORTS HOOK-ON**



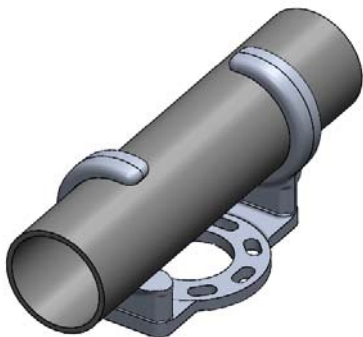
Connecting a bus to an insulator cap can be accomplished with ease and efficiency using the type AFSS.

A connector made of a lightweight aluminum alloy, it includes high strength aluminum clamping hardware for dependability and steel galvanized bolts and lockwashers for proper mounting to the insulator cap.

Recessed bolt heads allow single wrench installation.

The base of the bus support has eight holes for rotation and angular adjustment.

Static spring is standard.



| CATALOG NUMBER | MOUNTING BOLT CIRICLE | PIPE SIZE IPS | DIMENSIONS IN INCHES | |
|----------------|-----------------------|---------------|----------------------|--------|
| | | | A | C |
| 19-335 | 3 | 1/2 | 1 3/4 | 6 1/4 |
| 19-336 | 5 | 1/2 | 2 1/8 | 8 1/4 |
| 19-337 | 3 | 3/4 | 2 | 6 1/4 |
| 19-338 | 5 | 3/4 | 2 1/4 | 8 1/4 |
| 19-339 | 3 | 1 | 2 | 6 1/4 |
| 19-340 | 5 | 1 | 2 1/4 | 8 1/4 |
| 19-341 | 3 | 1 1/4 | 2 1/2 | 7 1/4 |
| 19-342 | 5 | 1 1/4 | 2 3/8 | 9 3/4 |
| 19-343 | 3 | 1 1/2 | 2 1/2 | 7 1/4 |
| 19-344 | 5 | 1 1/2 | 2 1/2 | 9 3/4 |
| 19-345 | 3 | 2 | 2 3/4 | 7 1/4 |
| 19-346 | 5 | 2 | 2 3/4 | 9 3/4 |
| 19-347 | 3 | 2 1/2 | 3 1/8 | 7 1/4 |
| 19-348 | 5 | 2 1/2 | 3 1/8 | 9 3/4 |
| 19-349 | 3 | 3 | 3 5/8 | 7 1/4 |
| 19-350 | 5 | 3 | 3 5/8 | 9 3/4 |
| 19-351 | 3 | 3 1/2 | 4 | 7 1/4 |
| 19-352 | 5 | 3 1/2 | 4 | 9 3/4 |
| 19-353 | 3 | 4 | 4 1/2 | 7 1/4 |
| 19-354 | 5 | 4 | 4 1/2 | 9 3/4 |
| 19-354-7BC | 7 | 4 | 4 1/2 | 12 1/4 |
| 19-355 | 3 | 4 1/2 | 4 7/8 | 7 1/4 |
| 19-356 | 5 | 4 1/2 | 4 7/8 | 9 3/4 |
| 19-356-7BC | 7 | 4 1/2 | 4 7/8 | 12 1/4 |
| 19-357 | 3 | 5 | 5 | 10 |
| 19-358 | 5 | 5 | 5 | 10 |
| 19-358-7BC | 7 | 5 | 5 | 12 1/4 |
| 19-359 | 3 | 6 | 5 1/2 | 10 |
| 19-360 | 5 | 6 | 5 1/2 | 10 |
| 19-360-7BC | 7 | 6 | 5 1/2 | 12 1/4 |