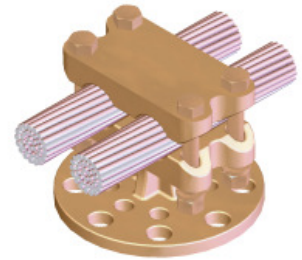
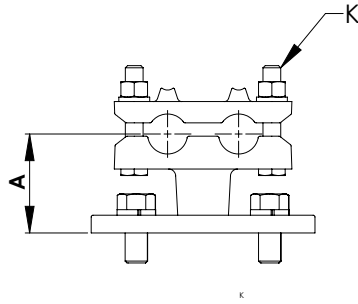


# BRONZE / ALUMINUM DOUBLE CABLE BUS SUPPORTS

SECTION

19-6-2CND



## BRONZE BUS SUPPORTS DOUBLE CABLE

CATALOG NUMBER	MOUNTING BOLT CIRCLE	CABLE SIZE		DIMENSIONS IN INCHES	
		AWG MIN	MCM MAX	A	K
19-387-2COND	3	8	600	2 3/8	3/8
19-388-2COND	5	8	600	2 1/4	3/8
19-389-2COND	3	4	1000	2 3/4	1/2
19-390-2COND	5	4	1000	3	1/2
19-391-2COND	3	1000	1500	2 1/2	1/2
19-392-2COND	5	1000	1500	2 3/8	1/2
19-393-2COND	3	1000	2000	3 1/2	1/2
19-394-2COND	5	1000	2000	3 1/2	1/2

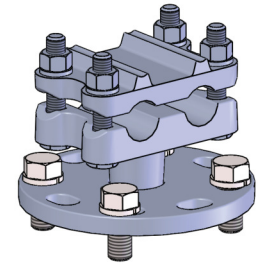
The type CSB features high-strength silicon bronze clamping hardware for strength and resistance to corrosion. All bolt heads are captivated to permit single-wrench installation.

For purposes of rotation and angular adjustment, the base of the bus support has eight holes.

Steel galvanized bolts and lock-washers are included for mounting to insulator.

## ALUMINUM BUS SUPPORTS DOUBLE CABLE

CATALOG NUMBER	MOUNTING BOLT CIRCLE	AAC CABLE SIZE		ACSR CABLE SIZE		DIMENSIONS IN INCHES	
		AWG MIN	MCM MAX	AWG MIN	MCM MAX	A	K
19-399-2COND	3	4	954	4	795	3	1/2
19-400-2COND	5	4	954	4	795	3 1/4	1/2
19-403-2COND	3	954	2000	795	1590	3 1/4	5/8
19-404-2COND	5	954	2000	795	1590	3 1/2	5/8



For a 7" bolt circle, add the descriptor "7BC" into the product number.

EX: 19-404-2COND-7BC

The type ASB features clamping hardware made of high tensile aluminum for resistance to corrosion and recessed bolt heads for single wrench installation.

Steel galvanized bolts and lockwashers are included for mounting the connector to the insulator cap. The eight holes in the base of the bus support permit rotation and angular adjustment.