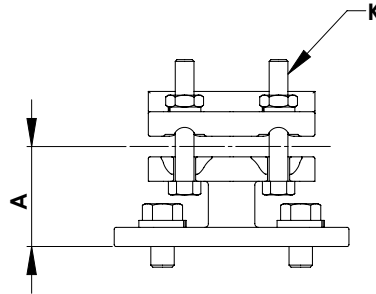
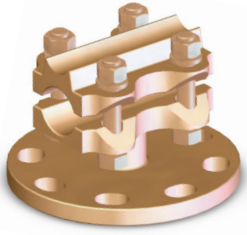


SECTION

19-6

**BRONZE / ALUMINUM
CABLE BUS SUPPORTS**



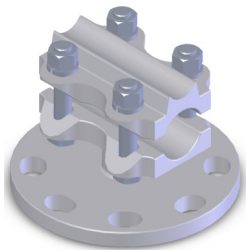
Bronze Cable Bus Supports:

The type CSB also features high-strength silicon bronze clamping hardware for strength and resistance to corrosion.

All bolt heads are captivated to permit single-wrench installation.

For purposes of rotation and angular adjustment, the base of the bus support has eight holes. Steel galvanized bolts and lock-washers are included for mounting to insulator.

BRONZE CABLE BUS SUPPORTS					
CATALOG NUMBER	MOUNTING BOLT CIRCLE	CABLE SIZE		DIMENSIONS IN INCHES	
		AWG MIN	MCM MAX	A	K
19-387*	3	8	600	1 7/8	3/8
19-388*	5	8	600	1 7/8	3/8
19-389*	3	4	1000	2 1/4	1/2
19-390*	5	4	1000	2 5/8	1/2
19-391	3	1000	1500	2 3/8	1/2
19-392	5	1000	1500	2 3/8	1/2
19-393	3	1000	2000	2 5/8	1/2
19-394	5	1000	2000	2 5/8	1/2

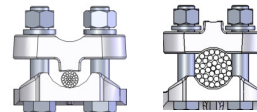


Aluminum Cable Bus Supports:

The type ASB features clamping hardware made of high tensile aluminum for resistance to corrosion and recessed bolt heads for single wrench installation.

Steel galvanized bolts and lock-washers are included for mounting the connector to the insulator cap. The eight holes in the base of the bus support permit rotation and angular adjustment.

Wide range reversible caps are denoted by: *



ALUMINUM CABLE BUS SUPPORTS							
CATALOG NUMBER	MOUNTING BOLT CIRCLE	AAC CABLE SIZE		ACSR CABLE SIZE		DIMENSIONS IN INCHES	
		AWG MIN	MCM MAX	AWG MIN	MCM MAX	A	K
19-399*	3	4	954	4	795	2 1/2	1/2
19-400*	5	4	954	4	795	2 3/4	1/2
19-403*	3	4/0	2000	4/0	1590	3	1/2
19-404*	5	4/0	2000	4/0	1590	3 1/4	5/8
19-404-SP (2500AAC)	5	2000	2500	1780	2312	3 1/4	5/8

Example:

For a 7" bolt circle, add the descriptor "7BC" into the product number. EX: 19-404-7BC